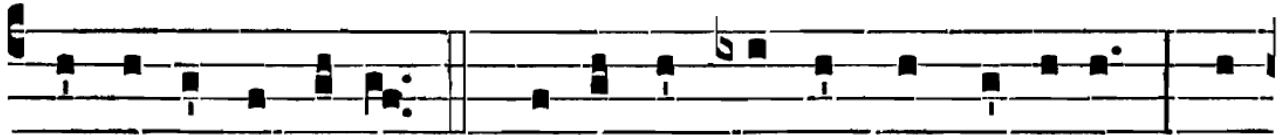


22^{ÈME} DIMANCHE
APRÈS LA PENTECÔTE

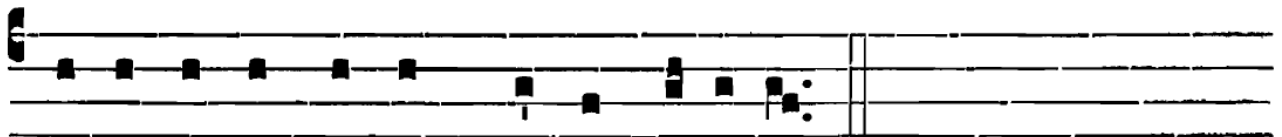
Graduel psalmodié :



E C-ce * quam bó-num, et quam ju-cúndum ha-bi-tá-



re frátres in únum! *Ps.* Sic-ut unguéntum in cá-pi-te, quod



descéndit in bárbam, bárbam A-a-ron.

Alleluia psalmodié :

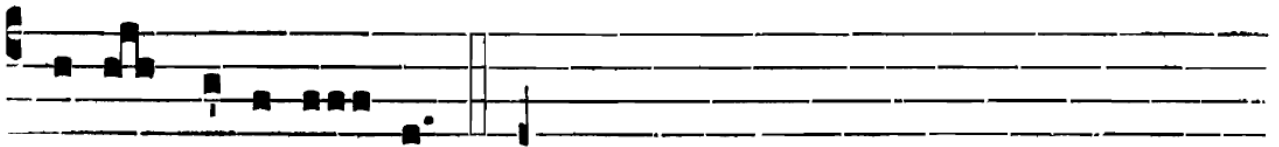
I



A L-le- lú- ia. * *ij.*



∇. Qui tíment Dómi-num, spé-rent in é- o : adjú-tor et pro-



téctor e- ó-rum est. Allelúia.