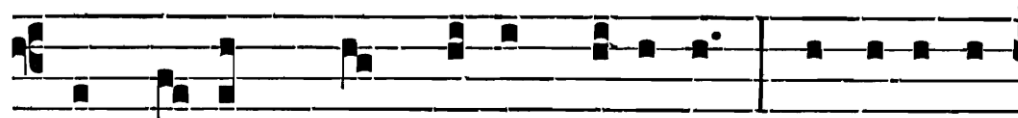


PÂQUES

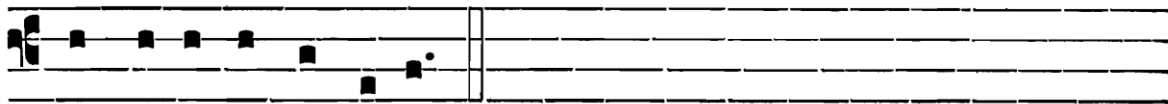
Graduel psalmodié :

Grad.
II

H



ÆC dí- es, *quam fé- cit Dómi- nus : exsultémus,



et laetémur in é- a.



∇. Confi- témi- ni Dómi- no, quó- ni- am bó- nus : quóni- am in



saécu- lum mi- se- ri- córdi- a é- jus. Allelúia. [68].

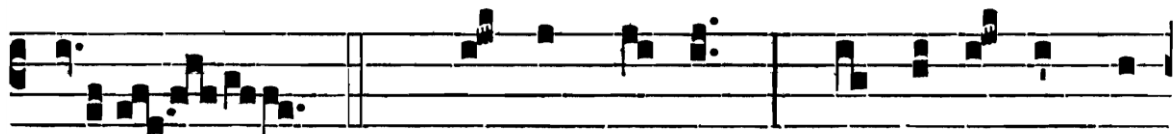
Alleluia psalmodié :

VII

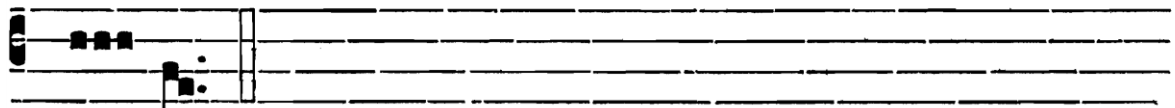
A



L- le- lú- ia. * ij.



∇. Páscha nóstrum immo- lá- tus est



Chrí- stus.