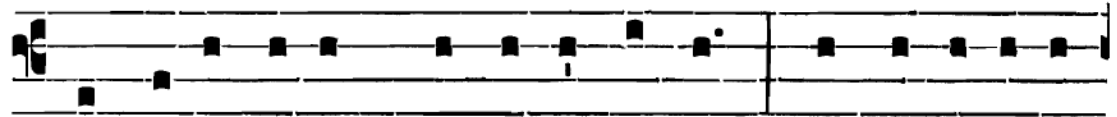


1^{ER} DIMANCHE
DE CARÊME

Graduel psalmodié :

Grad.
II

A



N-ge-lis sú- is * mandá- vit de te, ut custó- di- ant



te in ómni- bus ví- is tú- is. ∇. In má- nibus portábunt te,

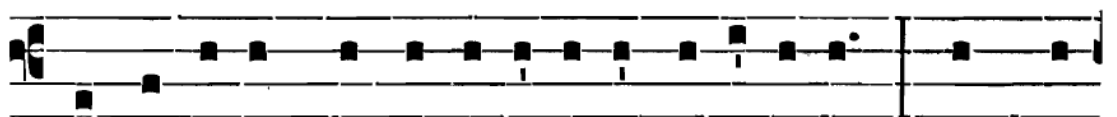


ne unquam offé- ndas ad lá- pi- dem pé- dem tú- um.

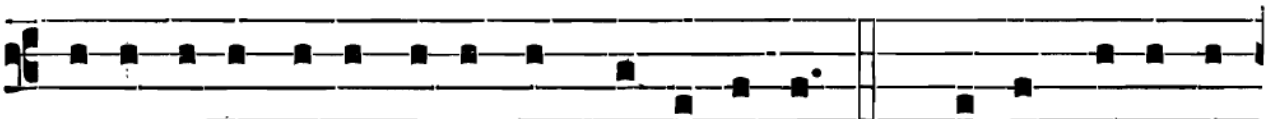
Trait psalmodié :

Trait
II

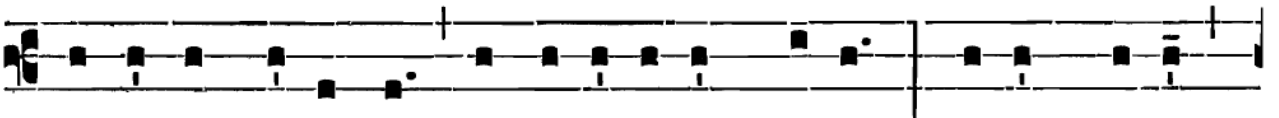
Q



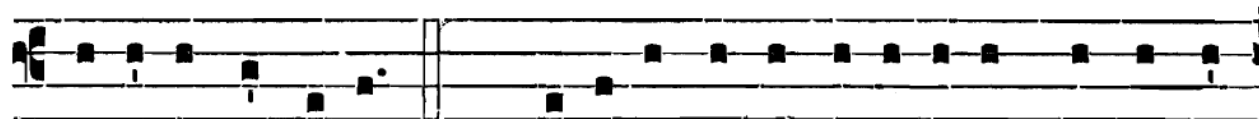
UI há- bi- tat * in adju- tó- ri- o Altí- ssimi, in pro-



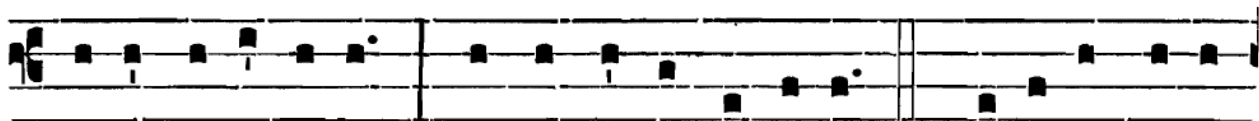
tecti- óne Dé- i caéli commo- rá- bi- tur. ∇. Dí- cet Dómi- no :



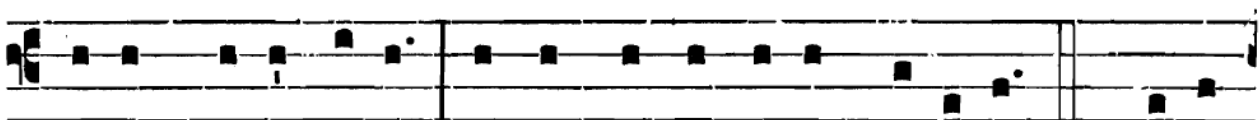
Suscé- ptor mé- us es, et re- fú- gi- um mé- um : Dé- us mé- us,



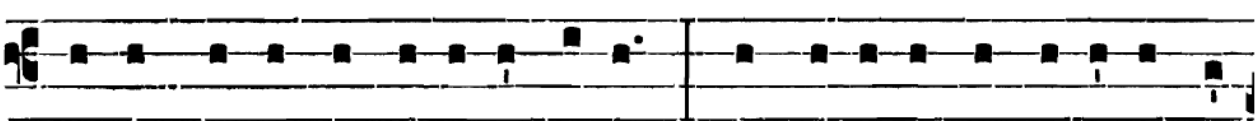
spe-rábo in é-um. *∇*. Quó-ni-am ípse li-be-rávit me de lá-



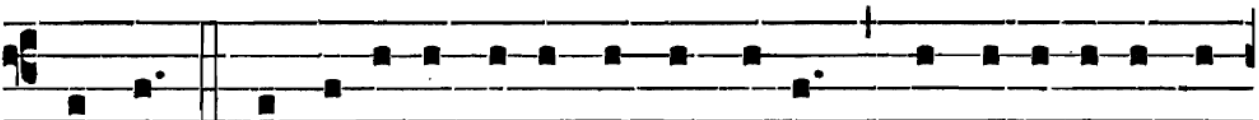
que-o ve-nánti-um, et a vérbo áspe-ro. *∇*. Scápu-lis sú-is



obumbrá-bit tí-bi, et sub pénnis é-jus spe-rábis. *∇*. Scú-to



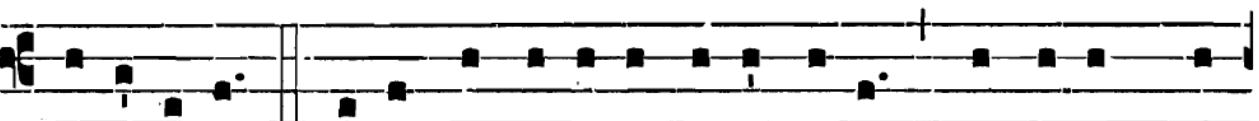
circúm-da-bit te vé-ri-tas é-jus : non timé-bis a timó-re no-



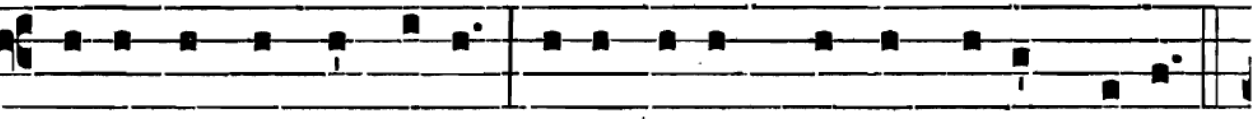
ctúrno. *∇*. A sagítta vo-lánte per dí-em, a ne-gó-ti-o per-



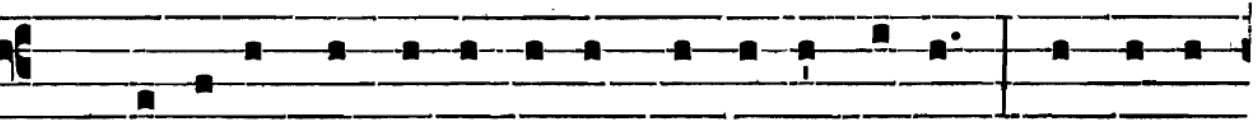
ambu-lánte in ténebris, a ru-í-na et daemó-ni-o me-



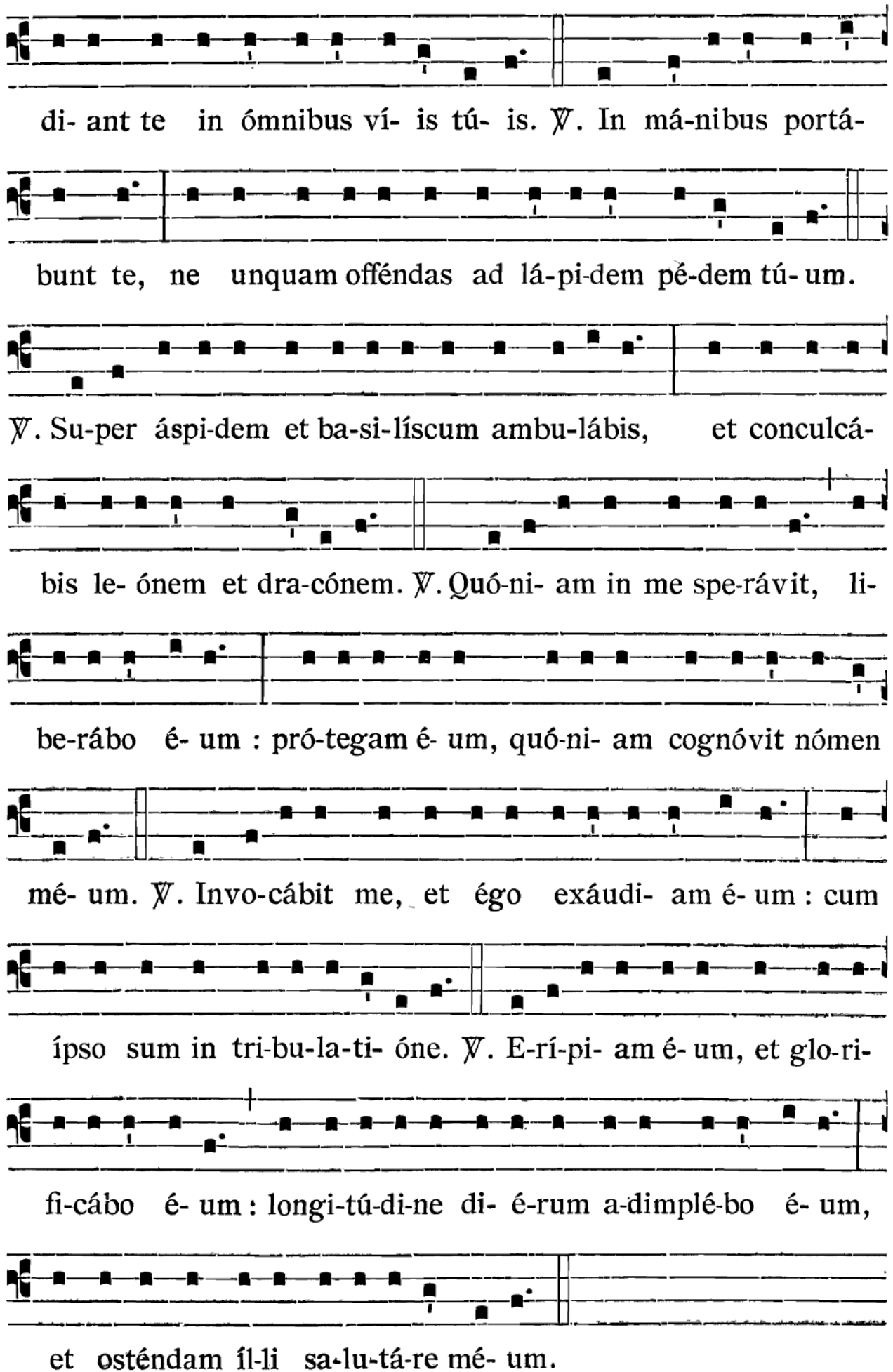
ri-di-áno. *∇*. Cádent a lá-te-re tú-o míl-le, et dé-cem míl-



li-a a déxtris tú-is : tí-bi autem non appro-pinquá-bit.



∇. Quó-ni-am Ange-lis sú-is mandá-vit de te, ut custó-



di- ant te in ómnibus ví- is tú- is. Ψ . In má-nibus portá-
bunt te, ne unquam offéndas ad lá-pi-dem pē-dem tú- um.

Ψ . Su-per áspi-dem et ba-si-líscum ambu-lábis, et conculcá-
bis le- ónem et dra-cónem. Ψ . Quó-ni- am in me spe-rávit, li-
be-rábo é- um : pró-tegam é- um, quó-ni- am cognóvit nómen
mé- um. Ψ . Invo-cábit me, et égo exáudi- am é- um : cum
ípsy sum in tri-bu-la-ti- óne. Ψ . E-rí-pi- am é- um, et glo-ri-
fi-cábo é- um : longi-tú-di-ne di- é-rum a-dimplé-bo é- um,
et osténdam íl-li sa-lu-tá-re mé- um.