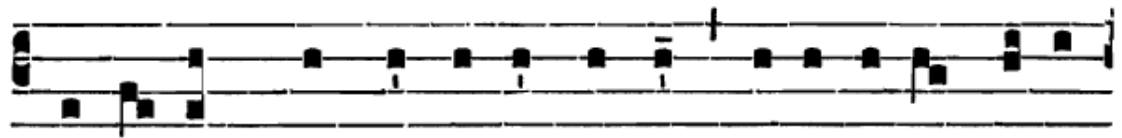


NATIVITÉ - MESSE DU JOUR

Graduel psalmodié :

Grad.
V

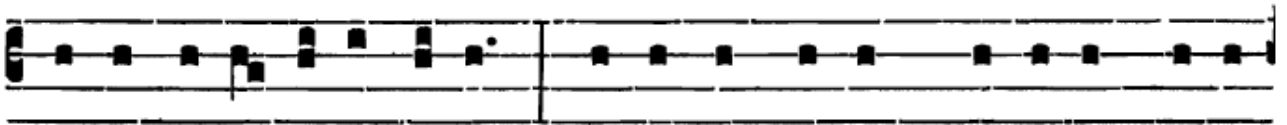
V



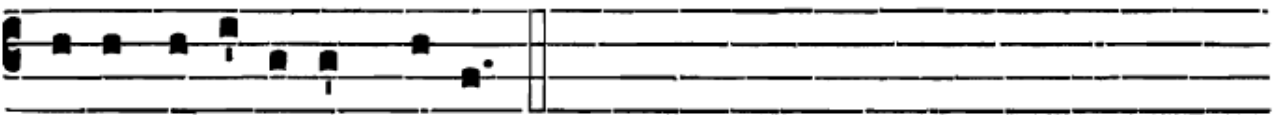
I-dé-runt * ómnes fí-nes térrae sa-lu-tá-re Dé- i



nóstri : ju-bi-lá-te Dé- o, ómnis térra. ∇. Nó- tum fé- cit Dó-



mi- nus sa-lu- tá-re sú- um : * ante conspéctum génti- um reve-



lávít justí- ti- am sú- am.

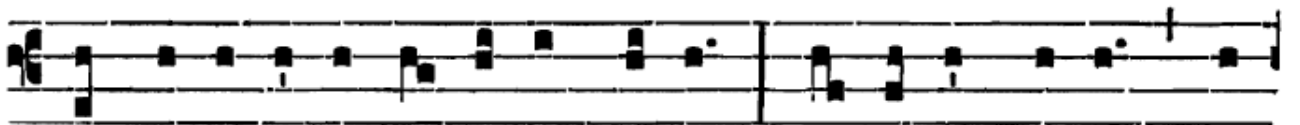
Alleluia psalmodié :

II

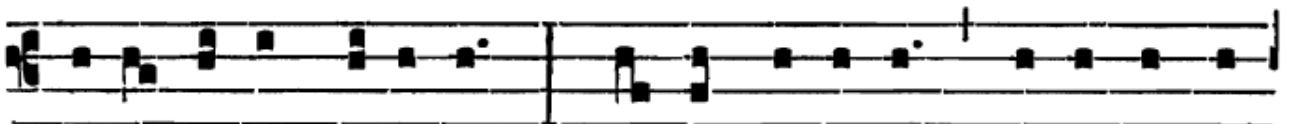
A



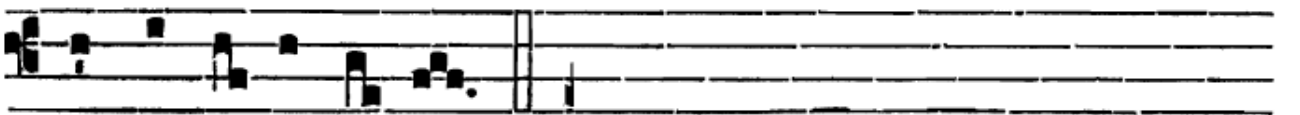
L- le- lú- ia. * ij. ∇. Dí- es



sancti- fi- cá- tus il- lú- xit nó- bis : ve- ní- te, géntes, et



ado- rà- te Dómi- num : qui- a hó- di- e descéndit lux



má- gna su- per tér- ram. Allelúia.