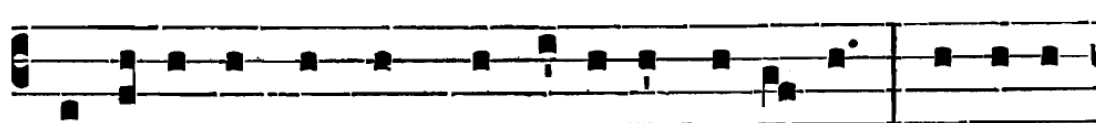


DIMANCHE DANS L'OCTAVE DE LA NATIVITÉ

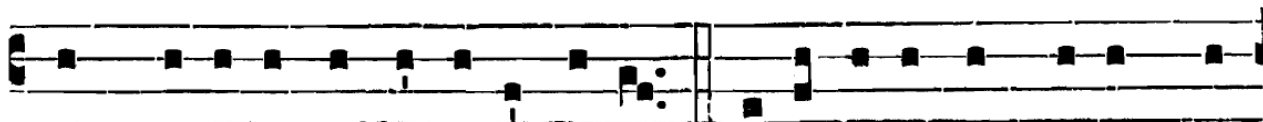
Graduel psalmodié :

Grad.
III

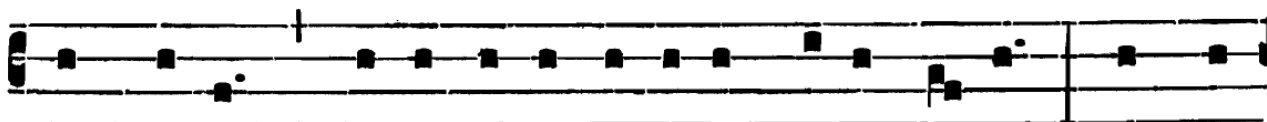
S



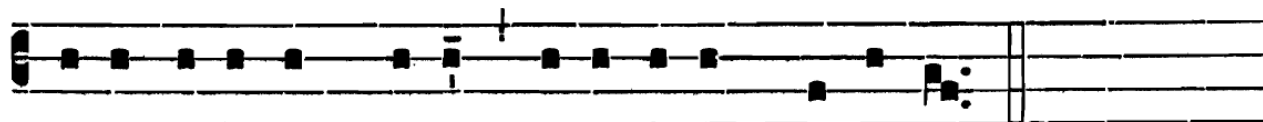
Pe-ci- ó-sus fórma* prae fí-li- is hómi- num : dif-fú-sa



est grá-ti- a in lá-bi- is tú- is. ∇. E-ructávit cor mé- um vér-



bum bó-num : dí-co é-go ó-pe-ra mé- a Ré-gi : língua

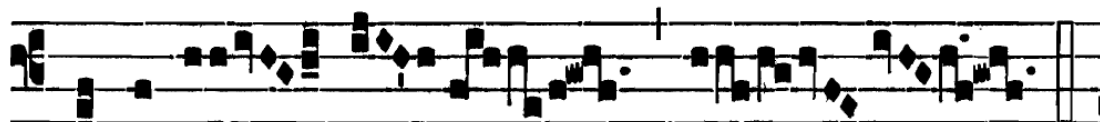


mé- a cá-lamus scríbae, ve-ló-ci-ter scri-béntis.

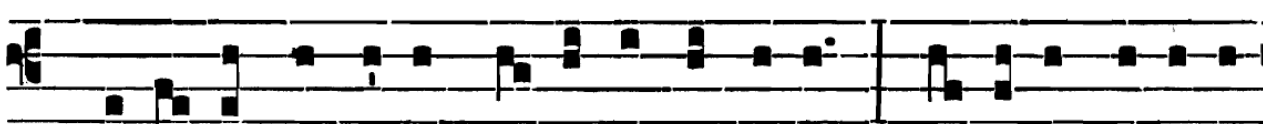
Alleluia psalmodié :

II

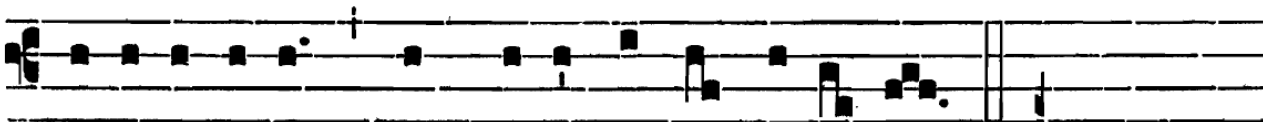
A



L-le-lú- ia. * ij.



∇. Dómi- nus regnávit, de-có-rem índu- it : índu- it Dóminus



forti-tú-di-nem, et praecínxit se virtú- te. Allelúia.